



WESTAR
— CONSTELLATION —





Westar Constellation is a chic set of 13 townhouses
themed on the understanding that less is more.

Simplicity meets efficiency as design meets space.
Stark minimalism is as much an emphasis here
as that of purpose and function.

Natural light and greenery are integral to the masterplan
promising unmatched panoramic views sans compromise to privacy.



An aerial night view of the Dubai skyline, featuring the Burj Khalifa as the central focus. The city is illuminated with various lights, and the sky is dark. The image is split into two main sections by a diagonal line: a dark, high-contrast view on the left and a lighter, more detailed view on the right.

LOCATION

JUMEIRAH VILLAGE

As the developer of more than \$30 billion of real estate in Dubai, Nakheel, has been instrumental in turning Dubai into one of the fastest growing cities in the world in the 21st century, and a world class destination for business and tourism.

The creator of a variety of landmark developments including The Palm Island, three man-made islands in the shape of palm trees; & The World, a series of 300 man-made islands that collectively form the map of the World. When completed, Nakheel's developments will have added more than 1000 km of waterfront to Dubai.

Part of Nakheel's distinctive Jumeirah Family set amid lush landscaping & unsurpassed leisure and lifestyle amenities; Jumeirah Village is a holistic living experience for its residents in the heart of Dubai's most desirable district.

FEATURES





POOL & BARBECUE

Live a little and take a break from the mundane. Celebrate, catch up or just chill out with friends at the barbecue or just beat the heat with a dip in the cool confines of the pool.



YOGA GARDEN

Need a quiet escape from the everyday tedium?
De-stress, meditate and reconnect with your inner self in the quiet
serenity of the roof top Yoga Garden.



BASEMENT DEN

In keeping with the Westar tradition of adding value to everything we do, Constellation houses a capacious basement den replete with a toilet and airconditioning. This space can easily be turned into a Home Office or a Theatre Room, as one chooses. The 62m² basement area is a space open to your imagination. The smartly designed patio allows natural light and ventilation to flow in - making it an area for more than just storage.

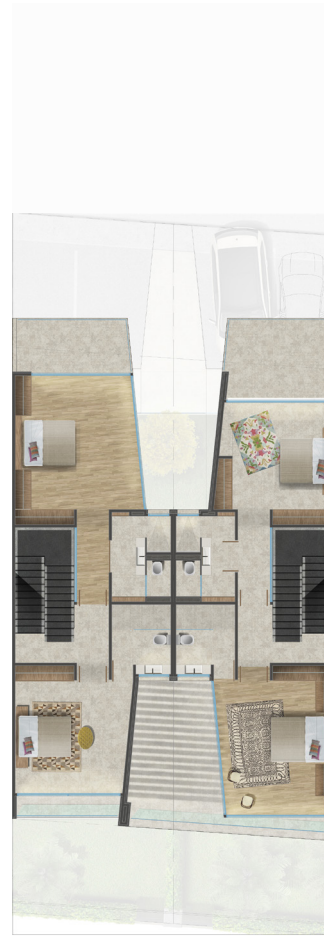
FLOOR PLANS



BASEMENT



GROUND FLOOR



FIRST FLOOR



SECOND FLOOR

GROSS AREA : 4,000 SQ. FT.

LEAD DESIGNERS



TCHV ARCHITECTS

TCHV, an European Design Studio, provides its clients with innovative architectural developments. TCHV has experience with medium to large-scale projects in China, United Arab Emirates, Qatar and Colombia, where they have designed and planned everything from independent luxury homes to entire cities. TCHV believes that great architecture and urban planning is independent of the development's location, size and type. With its immense global exposure, TCHV will bring in the latest state-of-the-art design to Westar Constellation.

DEVELOPER



WESTAR PROPERTIES



Since its inception in 2004, Westar has made an indelible mark on the Real Estate Sector of both the UAE and Nepal. Westar values and understands each individual's needs and strives continually to ensure that our customers' satisfaction and expectations are not just met, but exceeded at all levels. Westar benchmarks its service standards by adding competitive value across the board - especially where value addition is needed most.



REAR STREET VIEW

The simplicity of Westar Constellation unleashes the freedom to shape your world any way you please. Your constellation is all about your space.





www.westarperties.net